

CASE STUDY



AccuTrack monitoring system boosts production by 7.5% for Turkish knitter

Turkish home textile products manufacturer, **Yeşim Tekstil** has increased efficiency of its machinery by **7.5 percentage** points after installing AccuTrack's monitoring system for circular knitting machines.

The company, which employs almost 3,000 people in a 325,000sq m facility in Bursa, Turkey, specialises in home textiles and readymade clothing. Its daily capacity is 50 tons knitting, 100 tons dyeing, 100,000 metres printing and 250,000 pieces, of which 150,000 are ready-to-wear clothing and 100,000, home textiles.

Yeşim Tekstil is one of the four biggest integrated textile establishments in the world. The company has more than 160 knitting machines. Installation of the AccuTrack monitoring system has increased annual fabric production by 602,956.5kg. Average machine efficiency in 2007 was **65.1%, compared with 72.6% after installing the AccuTrack system** in 2008, according to Yeşim Tekstil.

Yeşim Tekstil carried out an extensive review of other systems and found the AccuTrack system was most appropriate for tackling its daily knitting issues. Mr Tunc Aydoğan, knitting manager of Yeşim Tekstil said: "The AccuTrack system was a perfect match to the system I had in my mind for our knitting plant."

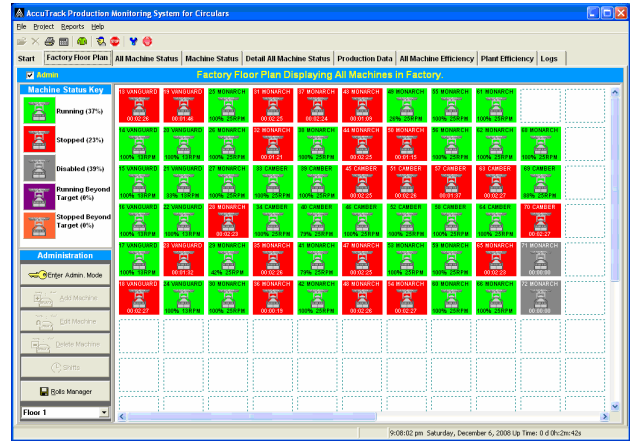
AccuTrack's managing director, Paramjit Saund says the feedback from Yeşim Tekstil has been excellent. "They find it extremely easy to use and very reliable. It has already helped the company with operator management, downtime analysis, productivity management, efficiency calculations and analysis of machine stop reasons, both automatic and manual."

Some key performance data is automatically generated for exchange with the company's internal systems.

The AccuTrack monitoring system for circular knitting machines can be applied to any make and model of machine. AccuTrack's technology includes universal sensors that can pick up most types of machine stop motions, thereby **automatically collecting data such as yarn, elastane and needle trips**. Other stop reasons, such as "out of raw materials", maintenance, machine set-up and cleaning are declared by the operator using the keypad.

Operator can also be managed by the system. Operators are registered into the system and each operator logs on at the shift start. The operator's details are then shown on the shift report. Furthermore, data is archived automatically for historical analysis to pick up long-term trends relating to plant, machinery, raw materials and labour.

AccuTrack software screens are designed to be ergonomic and to present vital performance and productivity data at a glance. Yeşim Tekstil projects the real-time "factory floor plan", unique to AccuTrack, on to a "white wall" in the factory for everyone to see.

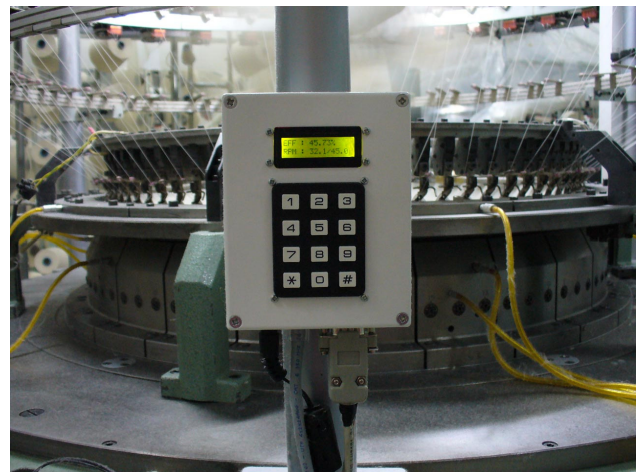


Factory Floor plan

The AccuTrack system can follow the shifts entered into the system and automatically generate **end-of-shift reports**, which summarise the entire shift's activity and performance. Customers find this useful, particularly as the **night shift report is automatically available to managers when they arrive at work in the morning**.

In today's highly competitive globalised markets and **current adverse economic climate**, with **rising energy, labour and raw material costs**, it is **imperative to optimise production facilities**. The AccuTrack system provides real time information, enabling managers to make quick and informed decisions, thereby improving the productivity of machines to improve efficiency of operation, according to AccuTrack.

The **resulting payback time and return on investment of deploying the system can be less than six months** in many cases.



Node Installed on Circular machine